



# FRAME PROTECTION KIT



LTe



# LTe BIKE FRAME PROTECTION KIT

## PLACEMENT INSTRUCTIONS

### WHAT YOU'LL NEED TO GET STARTED

- Lint free rag
- Spray bottle with soap
- Hair dryer / heat gun
- Clean bike
- Clean hands
- Measuring device

### INSTRUCTIONS

1. Clean bike thoroughly with mild soap and water prior to decal application. It is best if you can apply decals on a new frame.
  2. Wash hands before application or wear a pair of nitrile/latex gloves to keep any dirt from sticking to the decal.
  3. Get a spray bottle full of water. Add a drop or two of soap to help the decals slide around if needed.
  4. Working with one decal at a time, spray the appropriate area of the frame and adhesive-side of the decal.
  5. Place decal in the locations provided below, re-placing or sliding decal as needed.
  6. Once the decal is in the right spot, use the provided squeegee to start flattening the decal onto the frame. Start in the middle, working along the middle length. Gradually squeeze out the water toward the edges, working thoroughly and patiently to remove ALL water under the decal.
  7. Use a clean cloth or towel to help lay the decal flat and wipe off excess water. At this point, some edges of the decals might not be perfectly flat on the frame.
  8. Using a heat gun or hairdryer on low setting, apply heat to the decal edges for 2-3 seconds at a time. Using a clean rag or squeegee, work on any edges or bumps to lay them flush to the frame. Re-apply heat and repeat as necessary.
  9. When it's time to remove or replace your protective decals, use a heat gun to warm up adhesive and pull back decal slowly. **Do not remove without warming up decal adhesive first. Clean off any residual adhesive with mild soap and water.**
- NOTE:  
Feel free to cut out any custom shapes you might want using the remaining decal scraps. Get creative!

### DECALS

#### DOWNTUBE + LG/XL EXTENSION



#### TOP TUBE



#### SEATTUBE + L/XL



#### CHAINSTAY - INNER NDS/DS



#### CHAINSTAY BRIDGE



#### CHAINSTAY NDS ROTOR



#### DRIVE SIDE SEATSTAY / CHAINSTAY - OUTER



#### NON DRIVE SIDE SEATSTAY / CHAINSTAY - OUTER

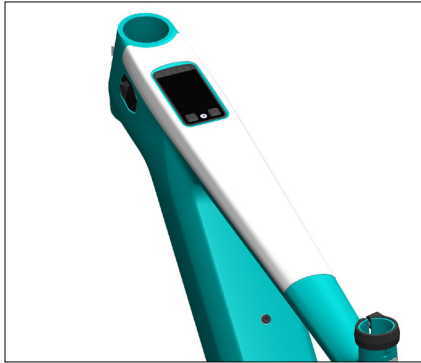


#### SEATSTAY - INNER NDS/DS



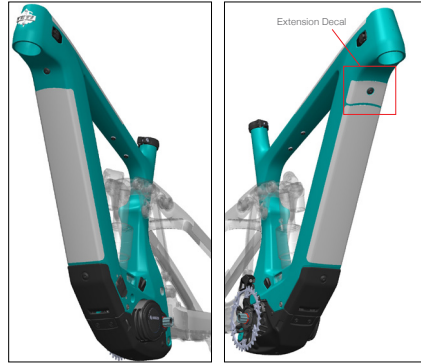
#### SEATSTAY BRIDGE





### TOP TUBE

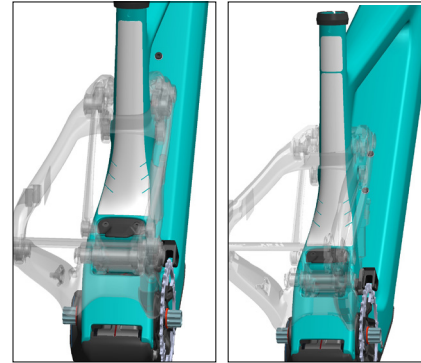
Place top tube decal such that it is lined up with the top tube display bezel and the headtube.



### DOWNTUBE

**SM-XL:** Place decal on the bottom of the downtube, lining up the bottom with the lower downtube guard.

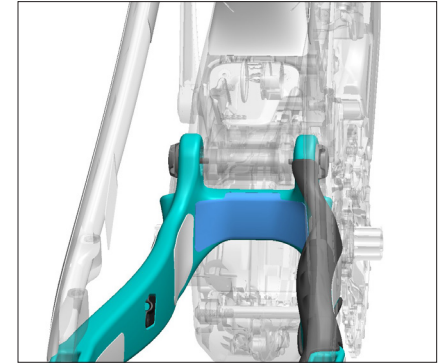
**LG-XL:** Place the downtube extension decal such that it lines up with the upper battery fixing bolt and the top of the main downtube protector.



### SEAT TUBE

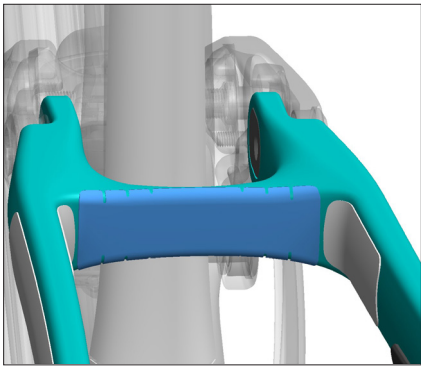
Center decal on back of seat tube, and place decal above Switch Link fender.

For larger frames, use seattube extension decal above seat tube decal.



### CHAINSTAY BRIDGE

Apply the Chain Stay Bridge Protector so the center surface wraps over the top surface as shown.



### SEAT STAY BRIDGE

Place the Seat Stay Protectors so the wrap to the top and bottom surfaces of the seat stay beginning in the center. Tire rub protection can be aligned to the bridge sticker and placed on the inside of the drive side and non-drive side seat stay.



### INNER CHAINSTAYS

(Left) Place the CS Inner Left decal as shown, lining up the edges of this decal and the CS Bridge decal.

(Right) Place the CS Inner Right decal as shown such that it lines up with the CS Bridge decal and fits within the rubber swingarm protectors.



### BRAKE LINE & ROTOR GUARD

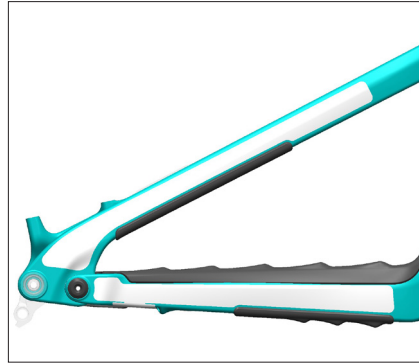
Place brake line protector to prevent contact between frame and brake line. Placement may vary depending on your brake system.

Place the brake rotor guard as shown in image to protect from rotor contacting the chainstay during wheel removal and install.



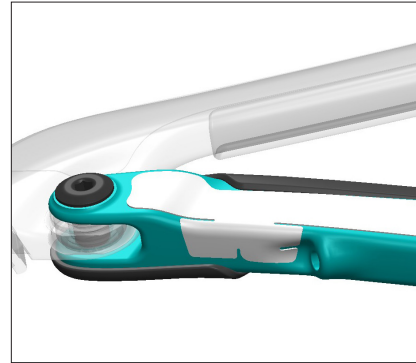
### **LEFT SEATSTAY/CHAINSTAY OUTER**

Center decals on chainstay and seatstays. Assure chainstay decal is behind any graphics.



### **SEATSTAY/CHAINSTAY - DRIVE SIDE**

Apply seat stay protectors as shown so the decal is anchored to the dropout and chainguard on the drive side.



### **CHAINSTAY - DRIVE SIDE CONT'D**

Make sure the drive side chainstay protector cable port wraps to prevent cable rub on chainstay.