

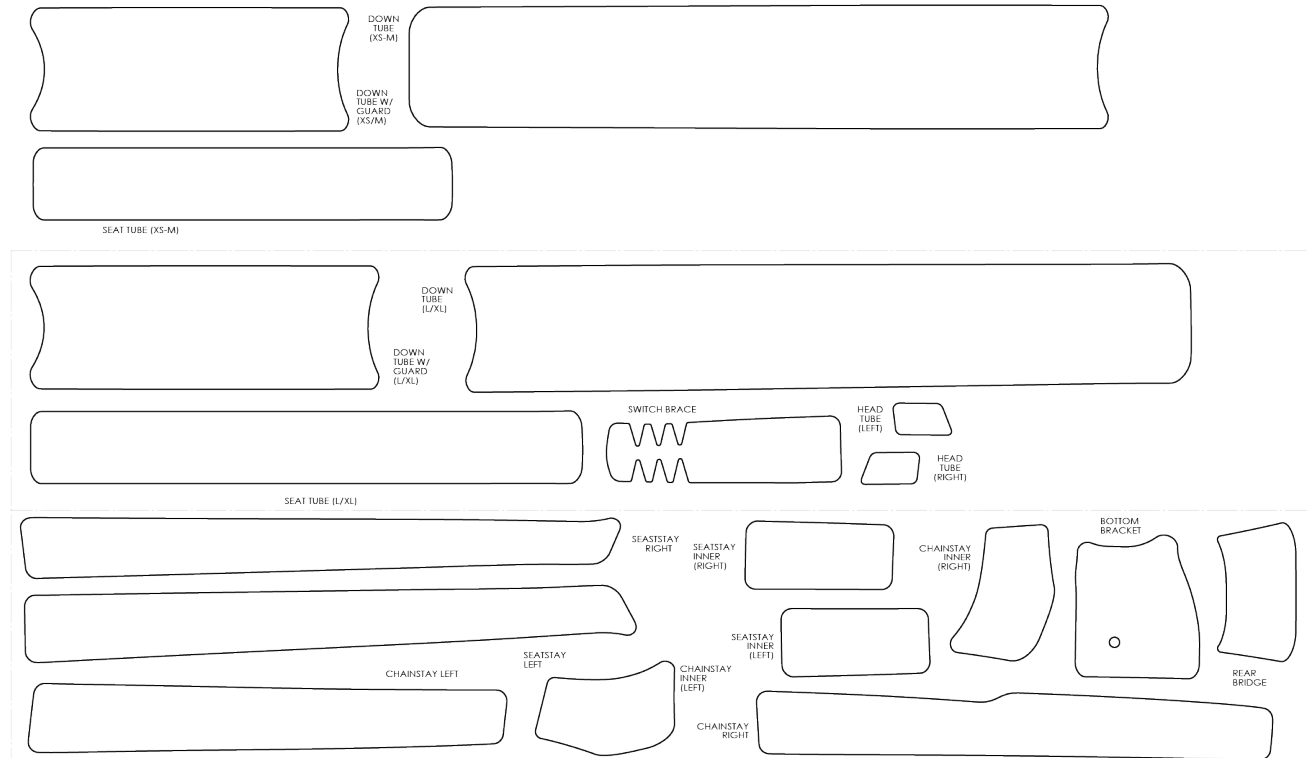


# YETI SB130 PROTECTIVE DECAL APPLICATION

# SB130 DECAL PROTECTOR KIT PLACEMENT INSTRUCTIONS

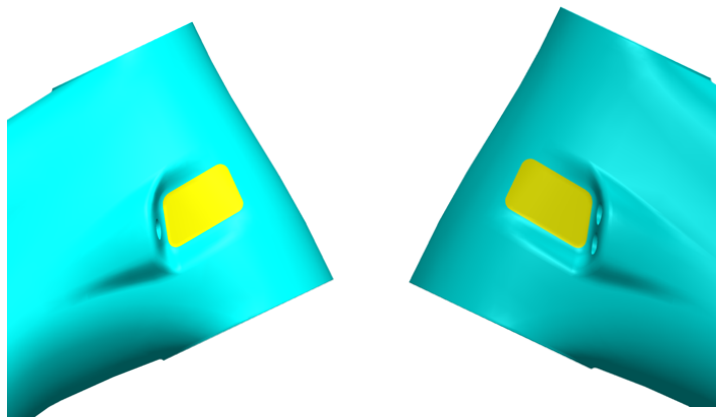
## INSTRUCTIONS

- 1) Clean bike thoroughly with mild soap and water prior to decal application. It is best if you can apply decals on a new frame.
- 2) Wash hands before application or wear a pair of nitrile/latex gloves to keep any dirt from sticking to the decal.
- 3) Get a spray bottle full of water. Add a drop or two of soap to help the decals slide around if needed.
- 4) Working with one decal at a time, spray the appropriate area of the frame and adhesive-side of the decal.
- 5) Place decal in the locations provided below, re-placing or sliding decal as needed.
- 6) Once the decal is in the right spot, use the provided squeegee to start flattening the decal onto the frame. Start in the middle, working along the middle length. Gradually squeeze out the water toward the edges, working thoroughly and patiently to remove ALL water under the decal.
- 7) Use a clean cloth or towel to help lay the decal flat and wipe off excess water. At this point, some edges of the decals might not be perfectly flat on the frame.
- 8) Using a heat gun or hairdryer on LOW setting, apply heat to the decal edges for 2-3 seconds at a time. Using a clean rag or squeegee, work on any edges or bumps to lay them flush to the frame. Re-apply heat and repeat as necessary.
- 9) When it's time to remove or replace your protective decals, use a heat gun to warm up adhesive and pull back decal slowly. Do not remove without warming up decal adhesive first. Clean off any residual adhesive with mild soap and water.



## WHAT YOU WILL NEED TO GET STARTED:

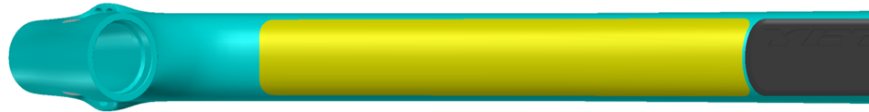
- \_\_\_\_ LINT FREE RAG
- \_\_\_\_ SPRAY BOTTLE W/ SOAP
- \_\_\_\_ HAIR DRYER/HEAT GUN
- \_\_\_\_ CLEAN BIKE
- \_\_\_\_ CLEAN HANDS
- \_\_\_\_ MEASURING DEVICE



### HEAD TUBE CABLE RUB PROTECTOR:

Place one protector on either side of the head tube to prevent cable rub.

4. **\*NOTE:** Feel free to cut out any custom shapes you might want using the remaining decal scraps. Get creative!



### DOWN TUBE PROTECTOR (NO SHUTTLE GUARD):

Place the lower end of the down tube protector decal approximately 3mm above the rubber down tube protector.

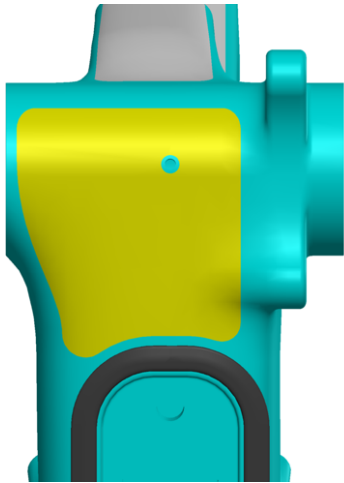
**\*NOTE:** There are two DT protector sizes. Use the correct one for your frame size! Short for SM-MD, Long for LG-XL.



### DOWN TUBE PROTECTOR (WITH SHUTTLE GUARD):

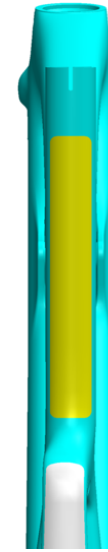
Place alternate Down Tube protector decal 3mm above the rubber Down Tube protector. It should sit between the lower Down Tube guard and Shuttle Guard.

**\*NOTE:** There are two DT protector sizes. Use the correct one for your frame size! Short for SM-MD, Long for LG-XL.



### BOTTOM BRACKET PROTECTOR:

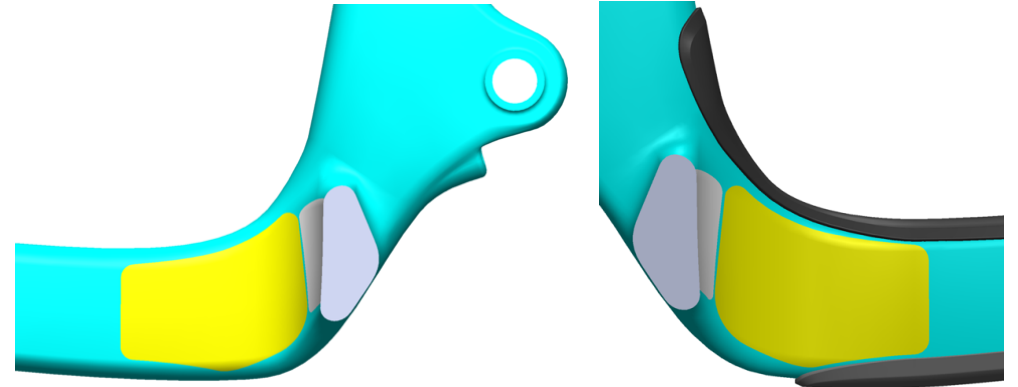
Place this protector decal on the bottom of the bottom bracket as shown above. Make sure that the decal does not cover the bottom bracket drain hole. For reference, 5mm of spacing from decal to frame BB shell on non-driveside.



### SEAT TUBE:

Place the seat tube protector decal on the back of the seat tube as shown. It sits just a few millimeters above the Switch Infinity cover.

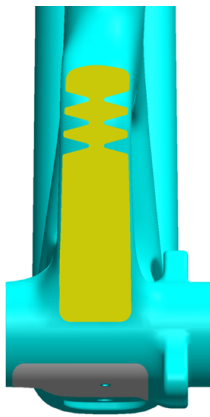
**\*NOTE:** There are two ST protector sizes. Use the correct one for your frame size. Short for SM-MD, Long for LG-XL.



### CHAIN STAY INNER PROTECTORS:

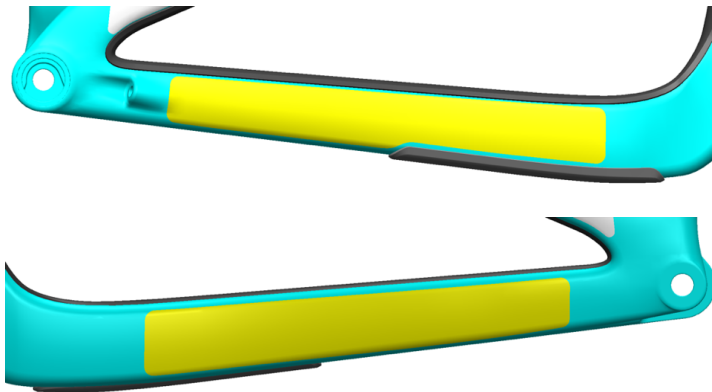
(Left) Place the CS Inner Left decal as shown, lining up the edges of this decal and the RT Bridge Decal.

(Right) Place the CS Inner Right Decal as shown such that it fits within the rubber swingarm protector



### SWITCH INFINITY BRACE:

Apply the Switch Brace Protector Decal starting at the base of the curve between the Bottom Bracket and Switch Brace.

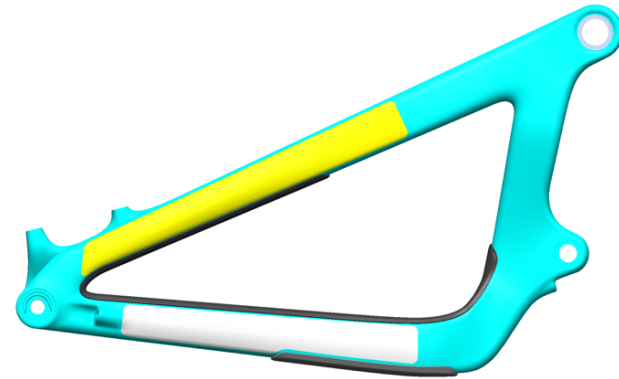


### CHAIN STAY HEEL STRIKE GUARDS:

(Top) Place drive side chain stay protector as shown. (Bottom) Place chain stay protector 60mm from center of dropout as shown on non drive side.

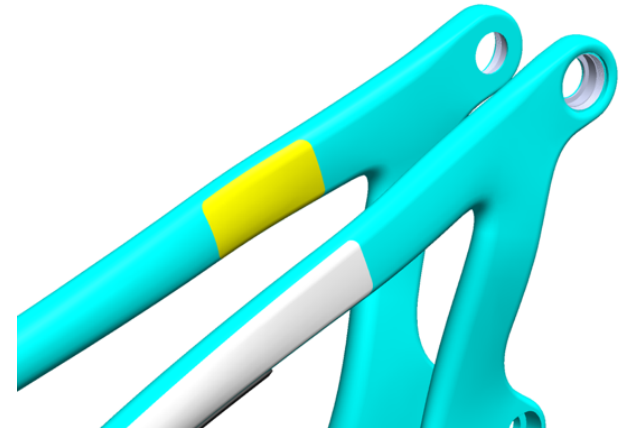
### DECAL REMOVAL

When it's time to remove or replace your protective decals, use a heat gun to warm up adhesive and pull back decal slowly. Do not remove without warming up decal adhesive first. Clean off any residual adhesive with mild soap and water.



### SEAT STAY HEEL STRIKE GUARDS:

Apply Seat Stay protectors as shown so that the curve of the decal near the dropout follows the curve of the frame downward.



### SEAT STAY INNER PROTECTORS:

Place Inner Seat Stay Decals as shown. Install your wheel and place the decals at your tire tread.

### NOW THAT YOUR BIKE IS CLEAN AND PROTECTED, GO OUT AND GET IT DIRTY!

If you have any questions related to your protector decals or any other part of your bike please feel free to drop us a line any time. We are always happy to help!

[yeticycles.com/support](http://yeticycles.com/support)  
[service@yeticycles.com](mailto:service@yeticycles.com)

**YETI CYCLES**  
 621 Corporate Circle, Unit B  
 Golden, CO 80401  
 (p) 303-278-6909

**BUSINESS HOURS**  
 Monday-Friday  
 8AM-11:30AM, 1:00PM-5:30PM  
 (Mountain Time)